

# Louisiana Medicaid Access & Quality Through Expansion

SreyRam Kuy, MD, MHS

Chief Medical Officer, Medicaid  
Louisiana Department of Health

# Louisiana: The Current State of Health

## Disparities in health and health care

- Over **one quarter (28%)** of Black residents in Louisiana report being in fair or poor general health compared to 19% of Whites and 14% of Hispanics
- Hispanics in Louisiana are **more likely to report having no personal doctor (37%)** compared to Blacks (31%) and Whites (22%).



We ***cannot*** solve our problems with the  
***same thinking*** we used when we  
***created them.***

Albert Einstein



# Louisiana's 5 Step Strategy....

- 1. Improve Access Through Expansion**
- 2. Assess Expansion**
- 3. Engage Stakeholders in Quality**
- 4. Define Quality Targets**
- 5. Integrate Quality, Transparency & Benchmarks**

# Step 1: Improve Access Through Expansion

Since passage of Affordable Care Act (ACA) in 2010, the Supreme Court ruled that the states could choose to join the Medicaid Expansion element of the ACA

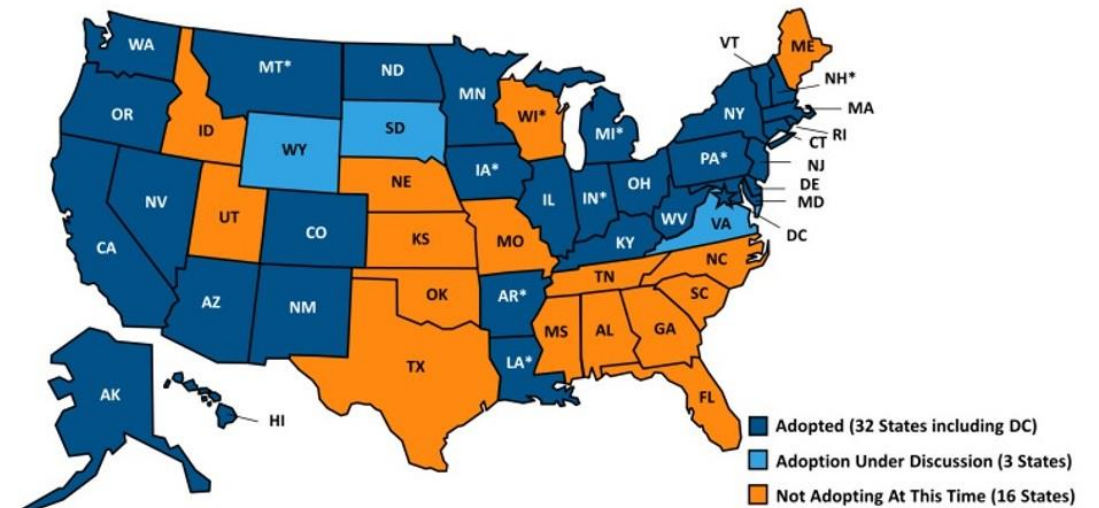
However, for years Louisiana believed “Medicaid expansion is not affordable and would not improve our health”.

But we can't solve our problems with the same thinking  
we used when we created them

Medicaid Expansion is simple: Through the ACA, states may raise the income eligibility for Medicaid up to 138% of Federal Poverty Level, and receive a great match rate --> up to 100% but never lower than 90% Fed Share

## The “Blue Boot” in a Sea of Orange

## Current Status of State Medicaid Expansion Decisions

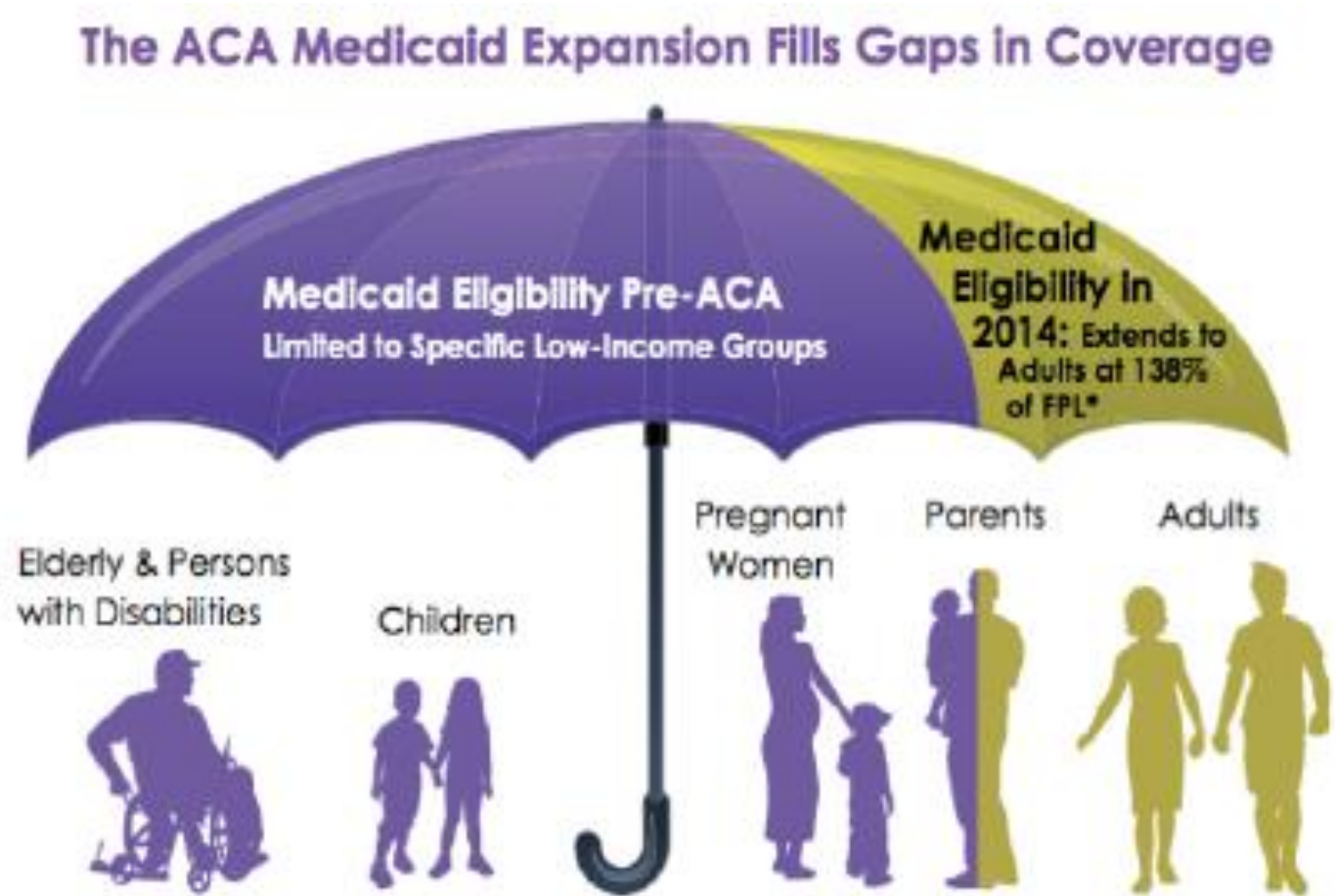


NOTES: Current status for each state based on KCMU tracking and analysis of state executive activity. \*AR, IA, IN, MI, MT, NH and PA have approved Section 1115 waivers. Coverage under the PA waiver went into effect 1/1/15, but it has transitioned coverage to a state plan amendment. Coverage under the MT waiver went into effect 1/1/2016. LA's Governor Edwards signed an Executive Order to adopt the Medicaid expansion on 1/12/2016, but coverage under the expansion is not yet in effect. VI covers adults up to 100% FPL in Medicaid, but did not adopt the ACA expansion. See source for more information on the states listed as "adoption under discussion."

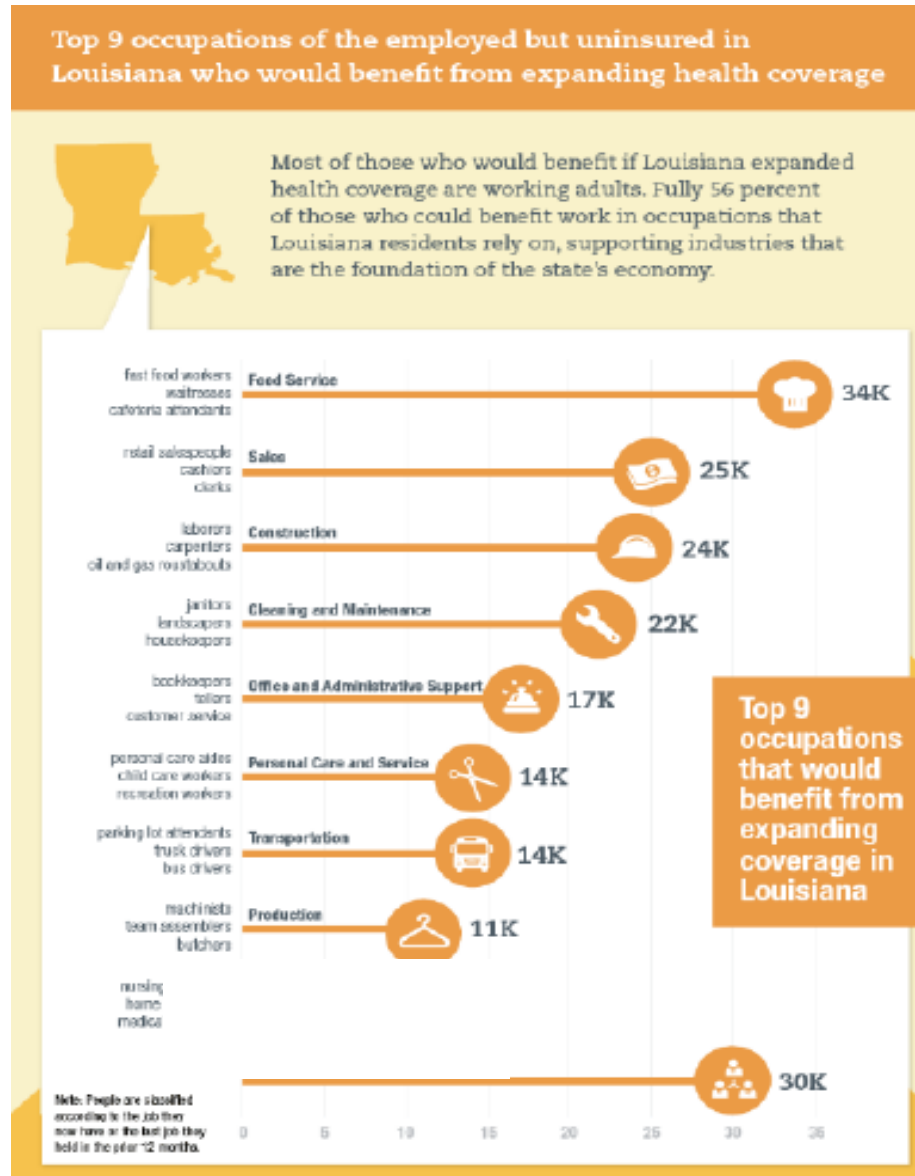
SOURCE: "Status of State Action on the Medicaid Expansion Decision," KFF State Health Facts, updated January 12, 2016. <http://kff.org/health-reform/state-indicator/state-activity-around-expanding-medicaid-under-the-affordable-care-act/>

# Who is Eligible for Expansion?

- Louisiana went from 12% FPL to 138%:
- LSU Public Policy Survey: Up to 25% of Louisiana 19-64 year old adults were uninsured prior to Medicaid Expansion
- This is approximately 500k adults according to Families USA
- Enrollment goal for year one: 375K



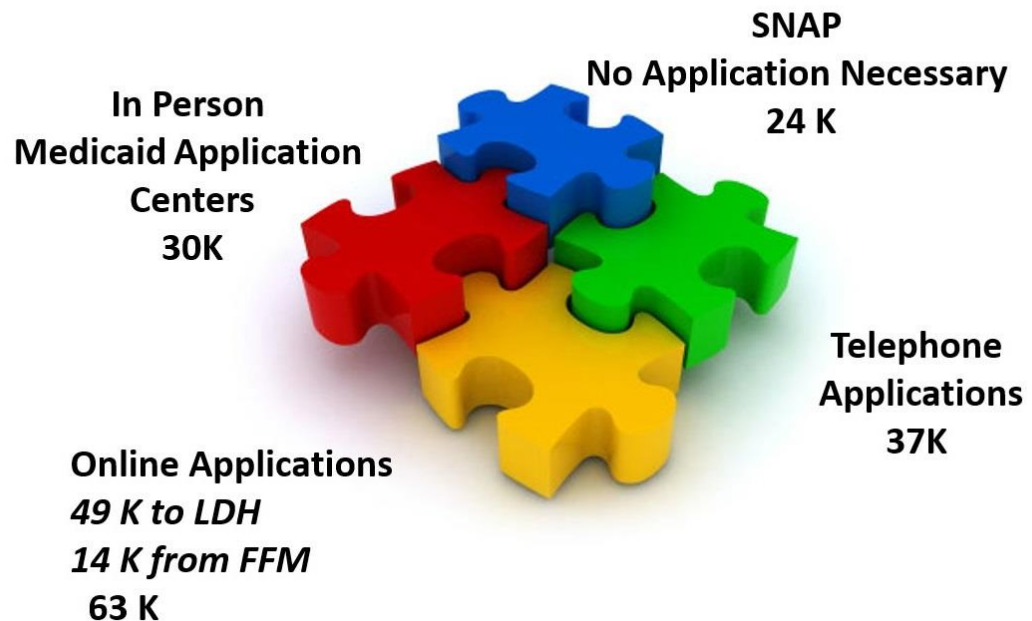
# Medicaid Expansion: Who Benefits?



# Innovating Expansion

## Medicaid Application Pathways (Since 6/1)

*Different Strokes for Different Folks*



## SNAP Participation to Determine *Actual Financial Eligibility* for Medicaid

- New option for states announced by CMS August 31, 2015
- People getting SNAP and “certain to be eligible” for Medicaid
- Takes earlier 1902(e)(14) waiver option to use SNAP to **enroll** people-- and then verify income at a later point-- to the next level
- Louisiana was **first** state to get CMS approval of SPA to use this strategy on May 27, 2016
- Identified additional 105K Expansion adults who could enroll without completing application and notified them and sent letters
- Almost 24,000 Medicaid applications have been **averted** through this strategy; person was immediately enrolled when they responded
- Integrated into application process and Phase 2 is to use strategy for Medicaid renewal of children as well as adults who get SNAP



# Louisiana's Network of Medicaid Application Centers

- Model in existence in Louisiana since 1992
- Locations throughout community where people can get in-person help in applying for Medicaid
- State pays **\$14** per completed application
- Has become more critical as all but 11 state Medicaid eligibility offices have been **closed** (*was 40+ in early 2000's*)
- Over 270 Medicaid Application Centers are accepting applications from public at least one day per week
- More than 50 new locations added—a number of them behavioral health providers; more application assisters as well
- Application Centers now have option to submit application through [healthcare.gov](https://healthcare.gov) and get **\$20** for decision or referral

# Who Knew???!! The Promise of Eligibility Worker Outstationing

- Option—actually a requirement-- has been in federal Medicaid regulations since early 1990's
- Initially envisioned by us as an alternative to Hospital Presumptive Eligibility—near real time instead of temporary eligibility decisions
- Discovered that model can provide sustainable administrative funding for eligibility determination capacity
- Host site's "donation" of the state share of match for direct cost of worker's salary/ benefits & outreach activities= match for FFP
- Reduced need for additional office space for added eligibility resources
- Improved customer service and accessibility for both internal customers (host site ) and Medicaid and CHIP applicants/recipients
- Added value for host is dedicated eligibility worker(s) with real time access to Medicaid systems

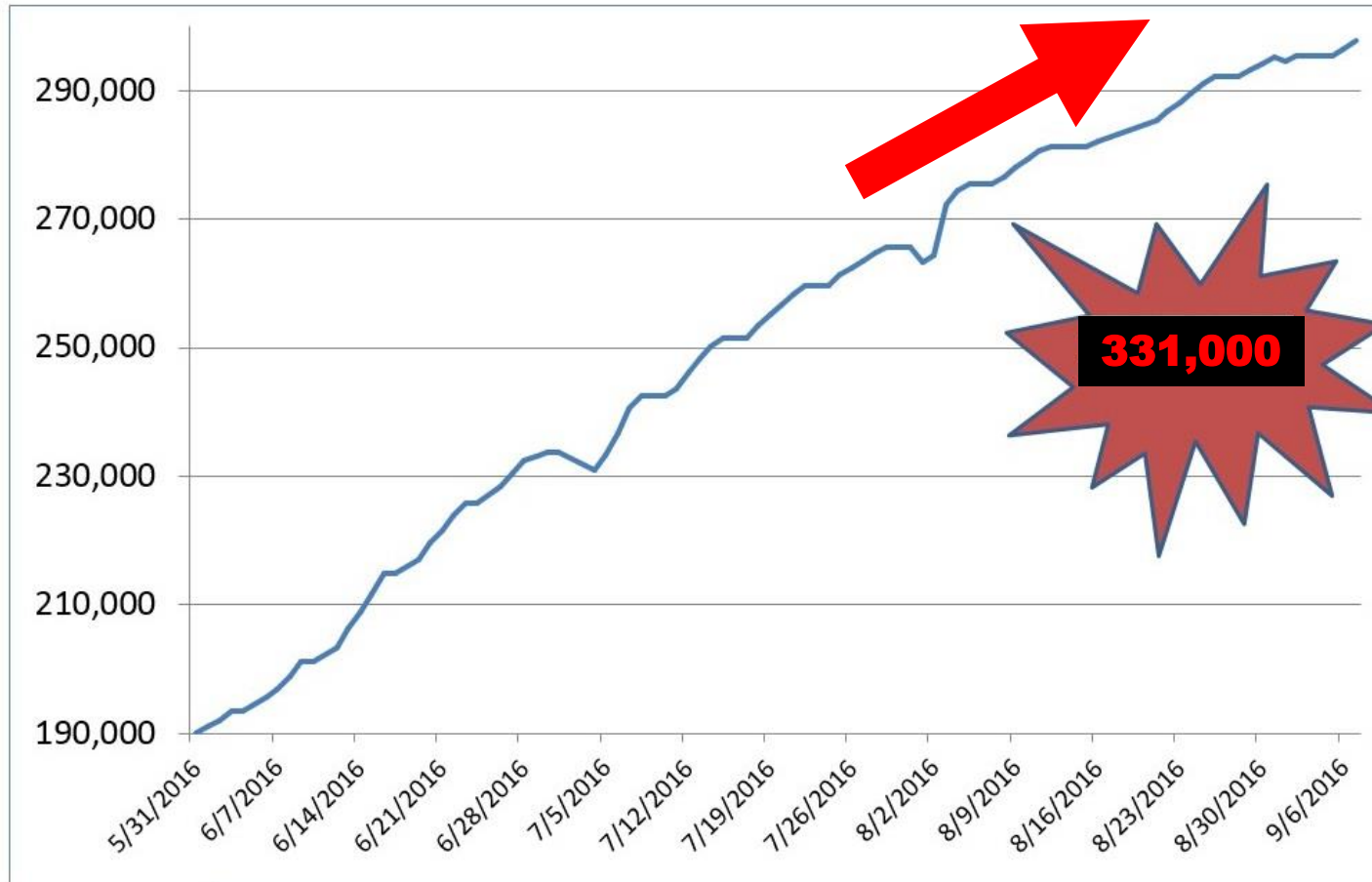
# Current Status of Outstationing in La

- 64 (experienced) eligibility workers already deployed at 44 distinct locations
- Primarily hospitals but some community health centers as well
- Multiple logistical issues to be navigated:—IT, legal, compensation
- We think it is a “win-win-win” for our customers
  - applicants and their families
  - providers and other host sites
  - State Medicaid agency

## Step 2: Evaluate Expansion

### Louisiana Lives Impacted Since July 1, 2016

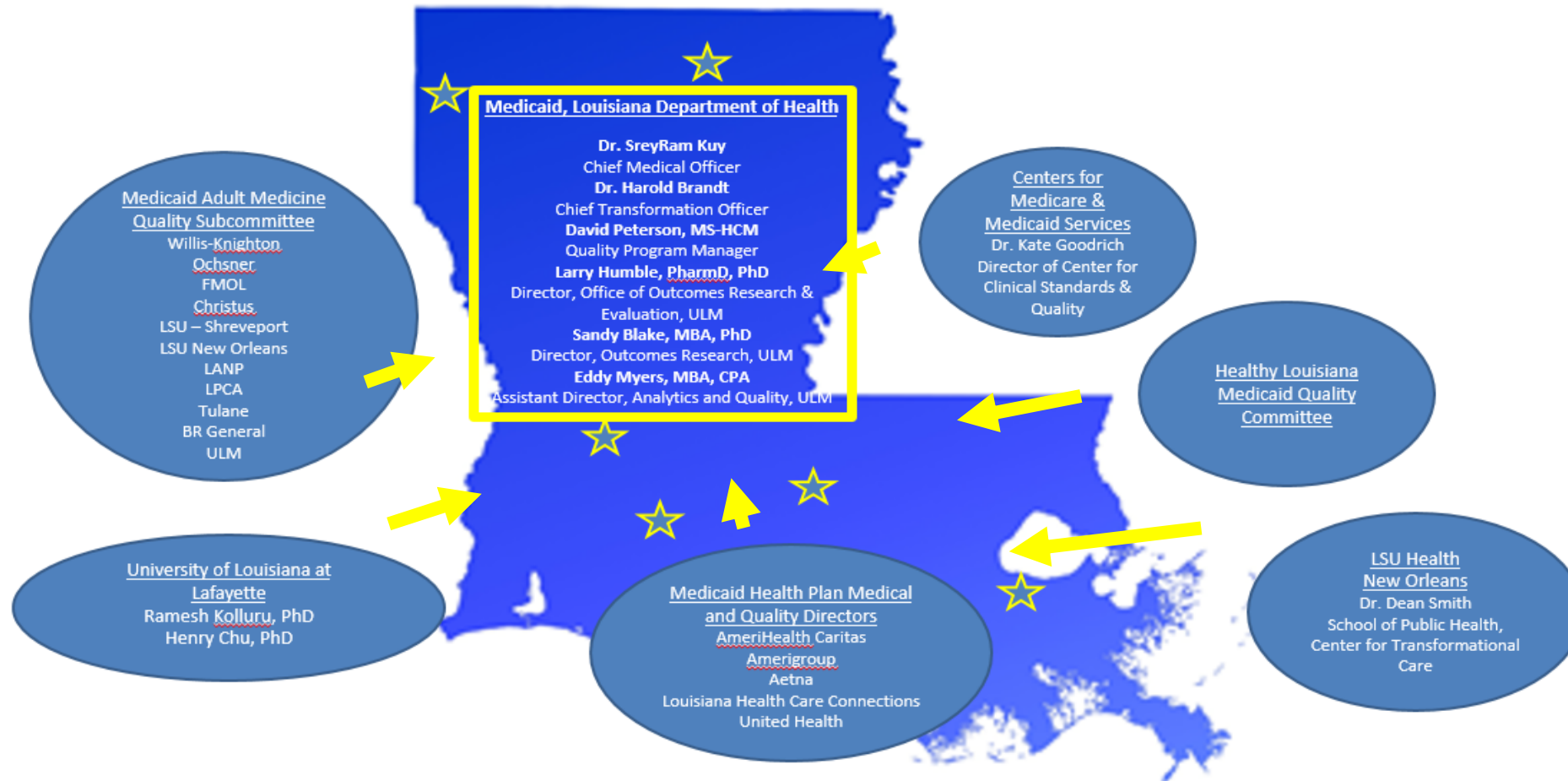
**331,000 New Adults!**





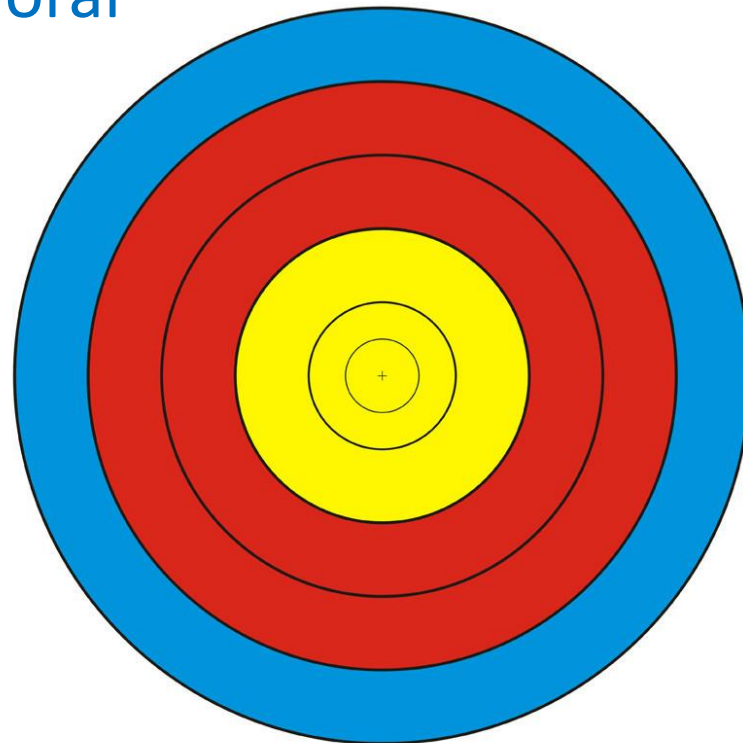
# Step 3: Engage Stakeholders in Quality

## Aligning Quality Across the State



# Step 4: Define Quality Targets

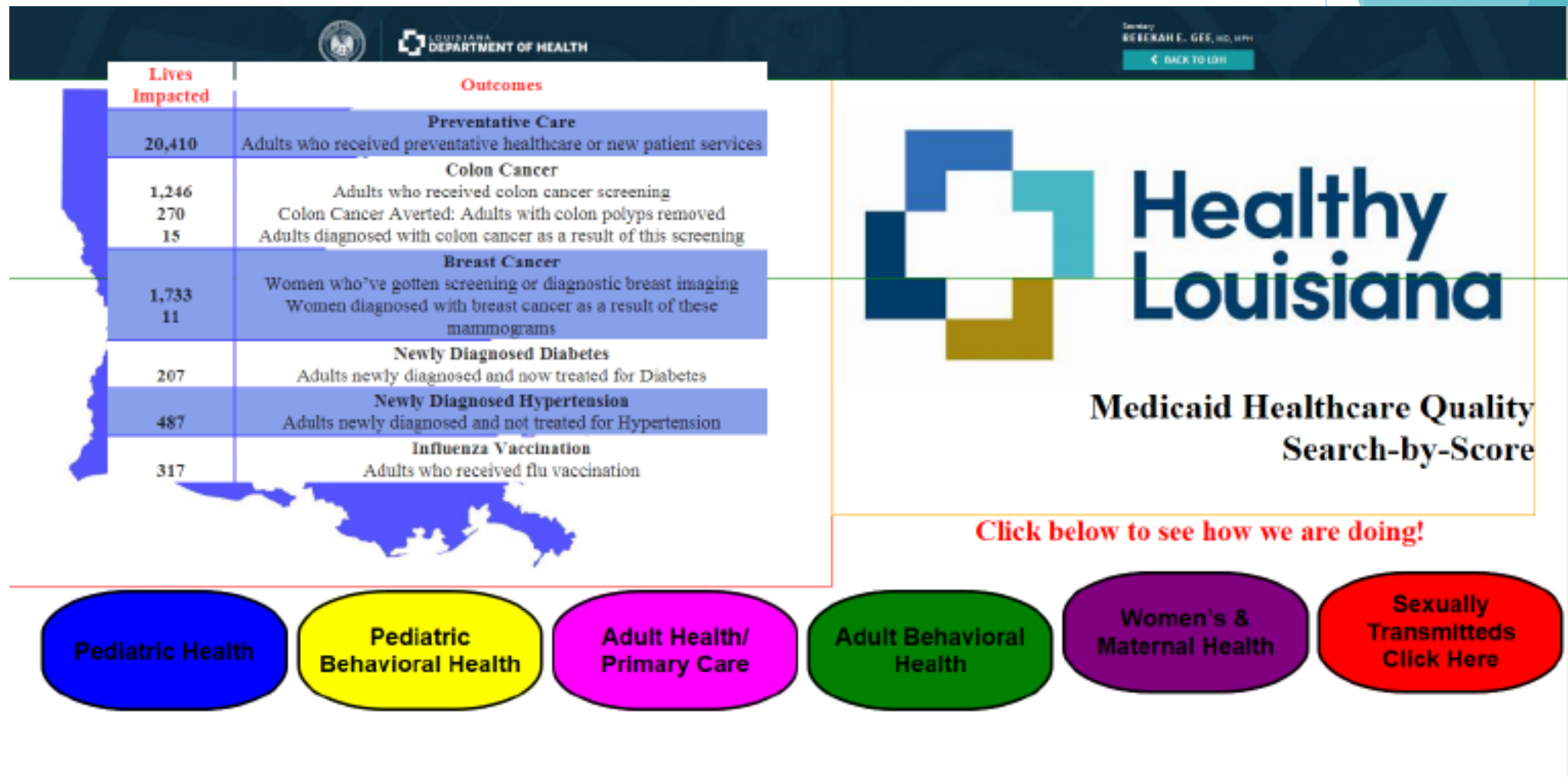
- 🔑 Women's Health
- 🔑 Maternal Health
- 🔑 Pediatric Health
- 🔑 Pediatric Behavioral Health



- 🔑 Adult Behavioral Health
- 🔑 Adult Health/Primary Care
- 🔑 Sexually Transmitted Infections (STIs)

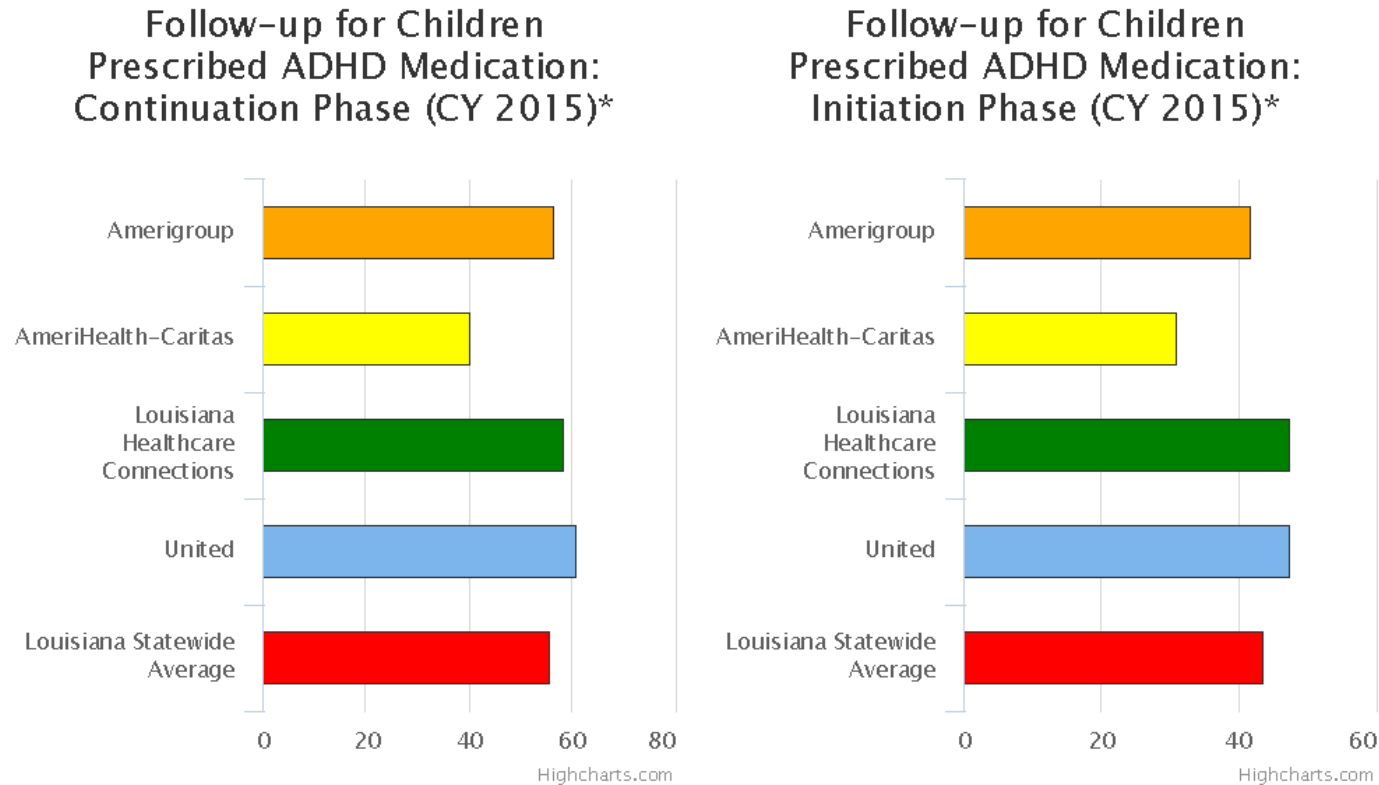
# Step 5: Integrating Quality, Transparency & Benchmarks

## A “Search By Score” Site



# Step 5: Integrating Quality, Transparency & Benchmarks

## A “Search By Score” Site: Evaluation of Quality Metrics



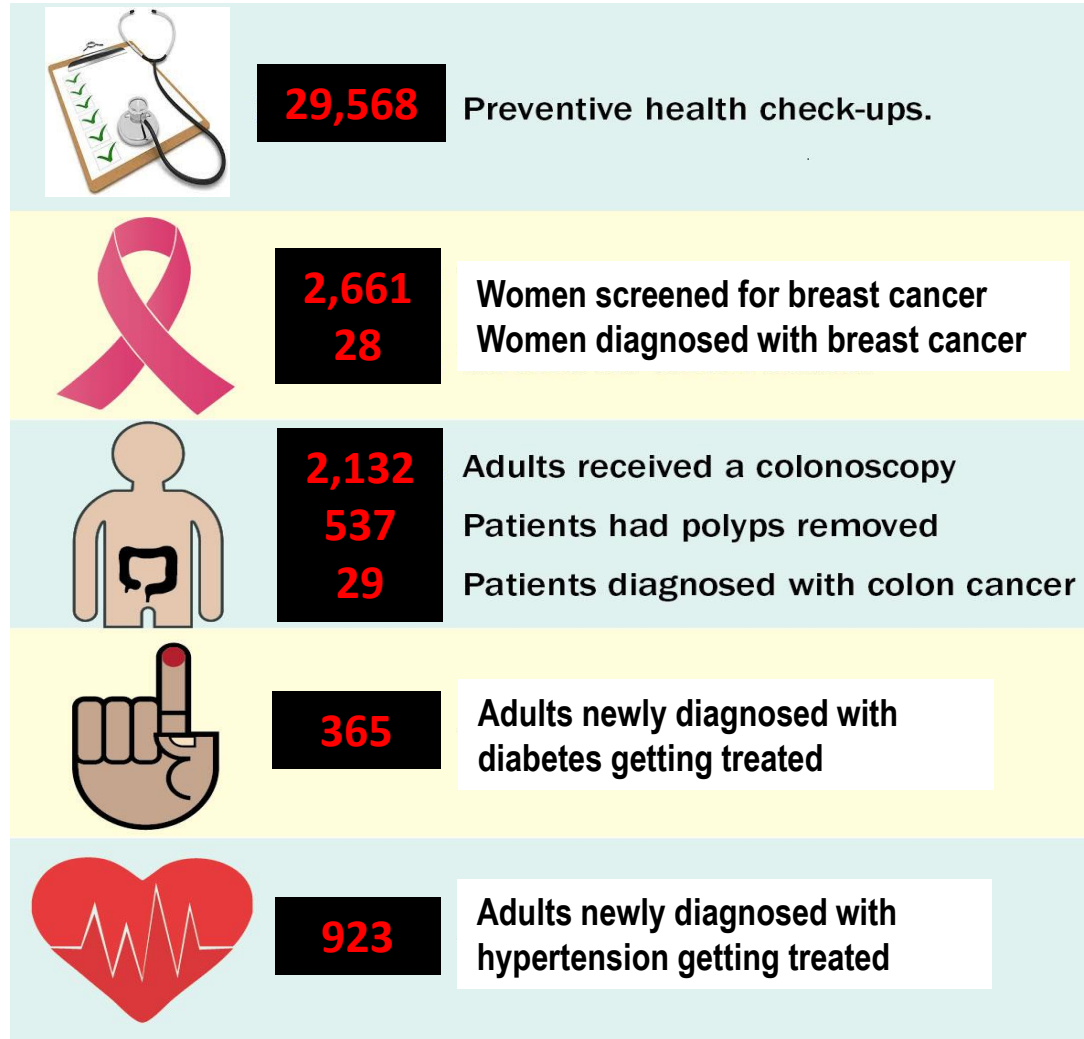
\*Follow-up for Children Prescribed ADHD Medication is a HEDIS® measure. HEDIS® is a registered trademark of the National Committee for Quality Assurance (NCQA).

Louisiana Medicaid



## Step 5: Integrating Quality, Transparency & Benchmarks

### Evaluation of Expansion Early Wins

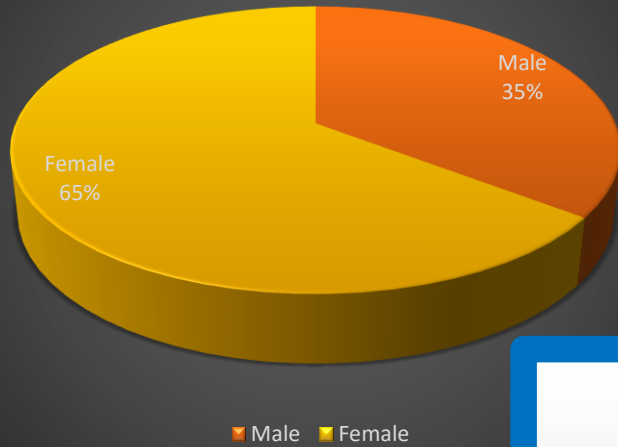


Louisiana Medicaid

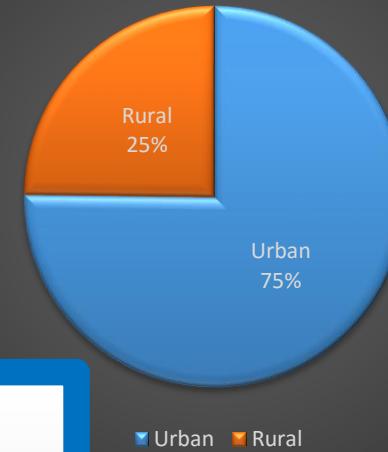
# Step 5: Integrating Quality, Transparency & Benchmarks

## Evaluation of Demographics

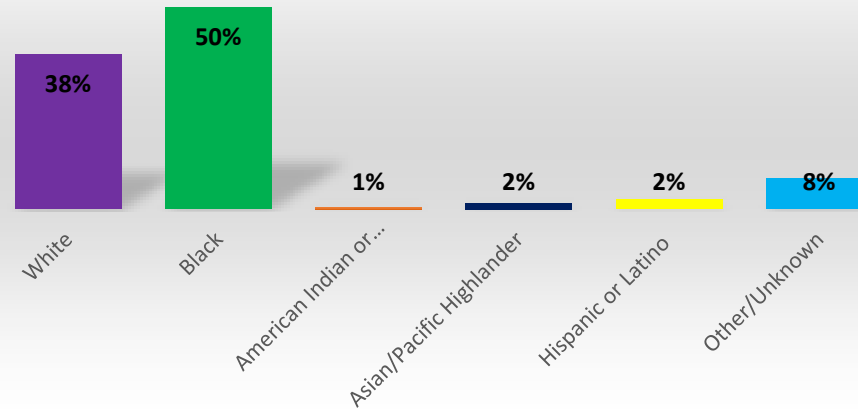
Expansion Population: Sex



Expansion population: Urban/Rural



Expansion Population: Race/Ethnicity



# 5 Steps to a Healthier Louisiana

- 1. Improve Access Through Expansion**
- 2. Assess Expansion**
- 3. Engage Stakeholders in Quality**
- 4. Define Quality Targets**
- 5. Integrate Quality, Transparency & Benchmarks**

A scenic sunset over a body of water, likely a bayou. The sky is a vibrant mix of orange, yellow, and red. Silhouettes of tall, thin trees line the shore, with many birds perched on their branches. A single bird is captured in flight in the center of the frame. The water reflects the warm colors of the sky. A semi-transparent dark rectangle is overlaid on the image, containing the title and speaker information.

# Louisiana Medicaid Access & Quality Through Expansion

SreyRam Kuy, MD, MHS